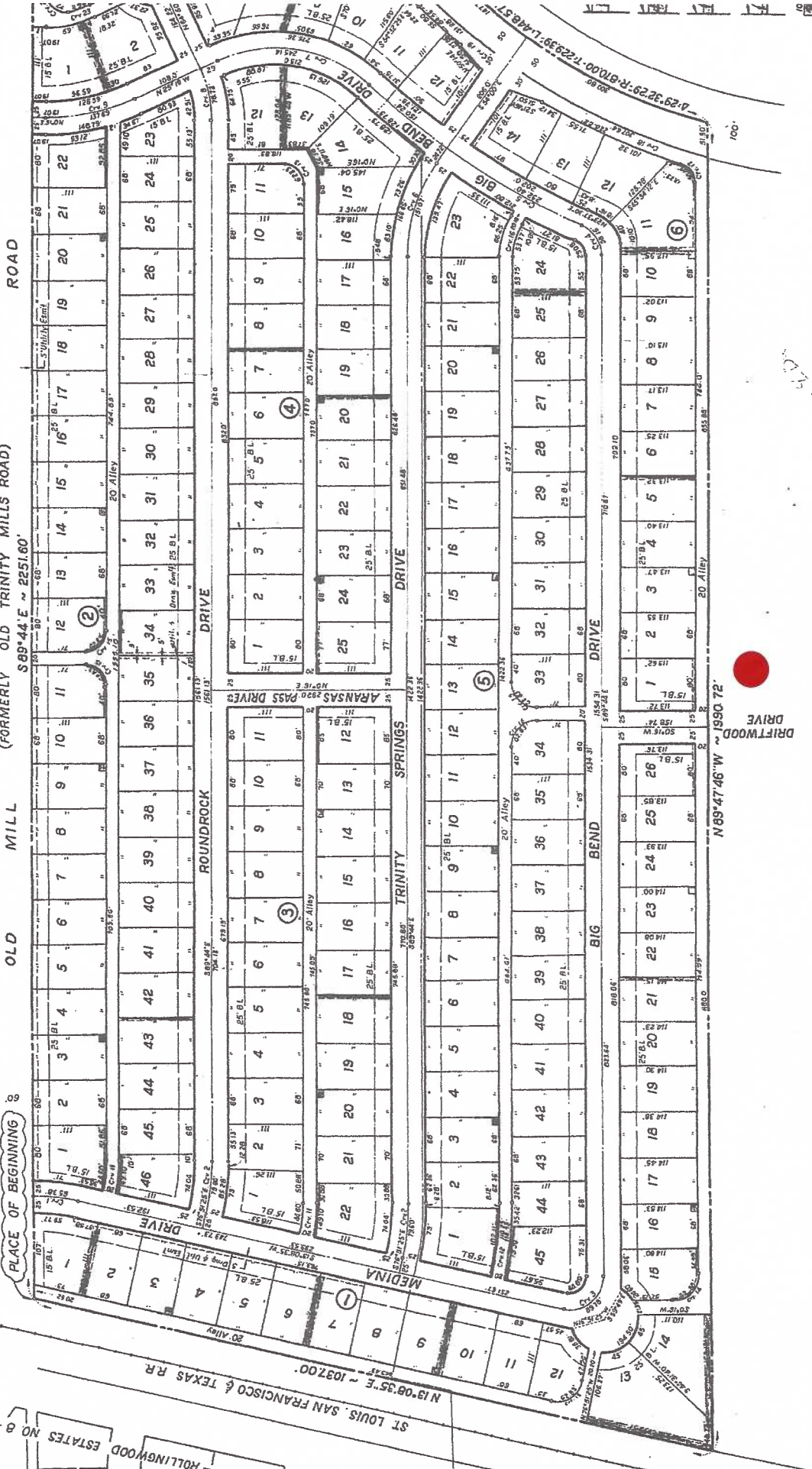


UNIVEST CORR - NOT PLATTED

ROAD MILL OLD (FORMERLY OLD TRINITY MILLS ROAD) S 89° 44' E ~ 2251.60'



CURVE DATA

No.	I	O	Inset	Outer	No. of	Inner	Outer	Δ	No. of	Inner	Outer	Δ	No. of	Inner	Outer	Δ
1	A	R	171.52	305.94	10	171.52	305.94	130.42	10	171.52	305.94	130.42	10	171.52	305.94	130.42
2	L	T	37.16	300.00	7	37.16	300.00	262.84	7	37.16	300.00	262.84	7	37.16	300.00	262.84
3	T	L	44.85	55.77	19	44.85	55.77	110.92	19	44.85	55.77	110.92	19	44.85	55.77	110.92
4	P	D	1.4582	21.54463	18	1.4582	21.54463	0.05864	18	1.4582	21.54463	0.05864	18	1.4582	21.54463	0.05864
5	A	R	369.47	354.47	4	369.47	354.47	15.00	4	369.47	354.47	15.00	4	369.47	354.47	15.00
6	L	T	74.00	83.99	10	74.00	83.99	9.99	10	74.00	83.99	9.99	10	74.00	83.99	9.99
7	P	D	0.06595	0.08092	14	0.06595	0.08092	0.01497	14	0.06595	0.08092	0.01497	14	0.06595	0.08092	0.01497
8	P	D	0.025235	0.025235	14	0.025235	0.025235	0.00000	14	0.025235	0.025235	0.00000	14	0.025235	0.025235	0.00000
9	T	L	31.36	62.72	15	31.36	62.72	31.36	15	31.36	62.72	31.36	15	31.36	62.72	31.36
10	P	D	259.8320	14.59160	16	259.8320	14.59160	0.08551	16	259.8320	14.59160	0.08551	16	259.8320	14.59160	0.08551
11	P	D	1.4582	0.57256	18	1.4582	0.57256	0.05864	18	1.4582	0.57256	0.05864	18	1.4582	0.57256	0.05864
12	A	R	66.56	36.30	30	66.56	36.30	30.26	30	66.56	36.30	30.26	30	66.56	36.30	30.26

MORNINGSIDE
 CARROLLTON, TEXA.
 LEVI NOBLES SURVEY ~ ABSTRA
 DALLAS COUNTY
 DENTON COUNTY

DRIFTWOOD DRIVE
 N 89° 47' 46" W ~ 1930.72'