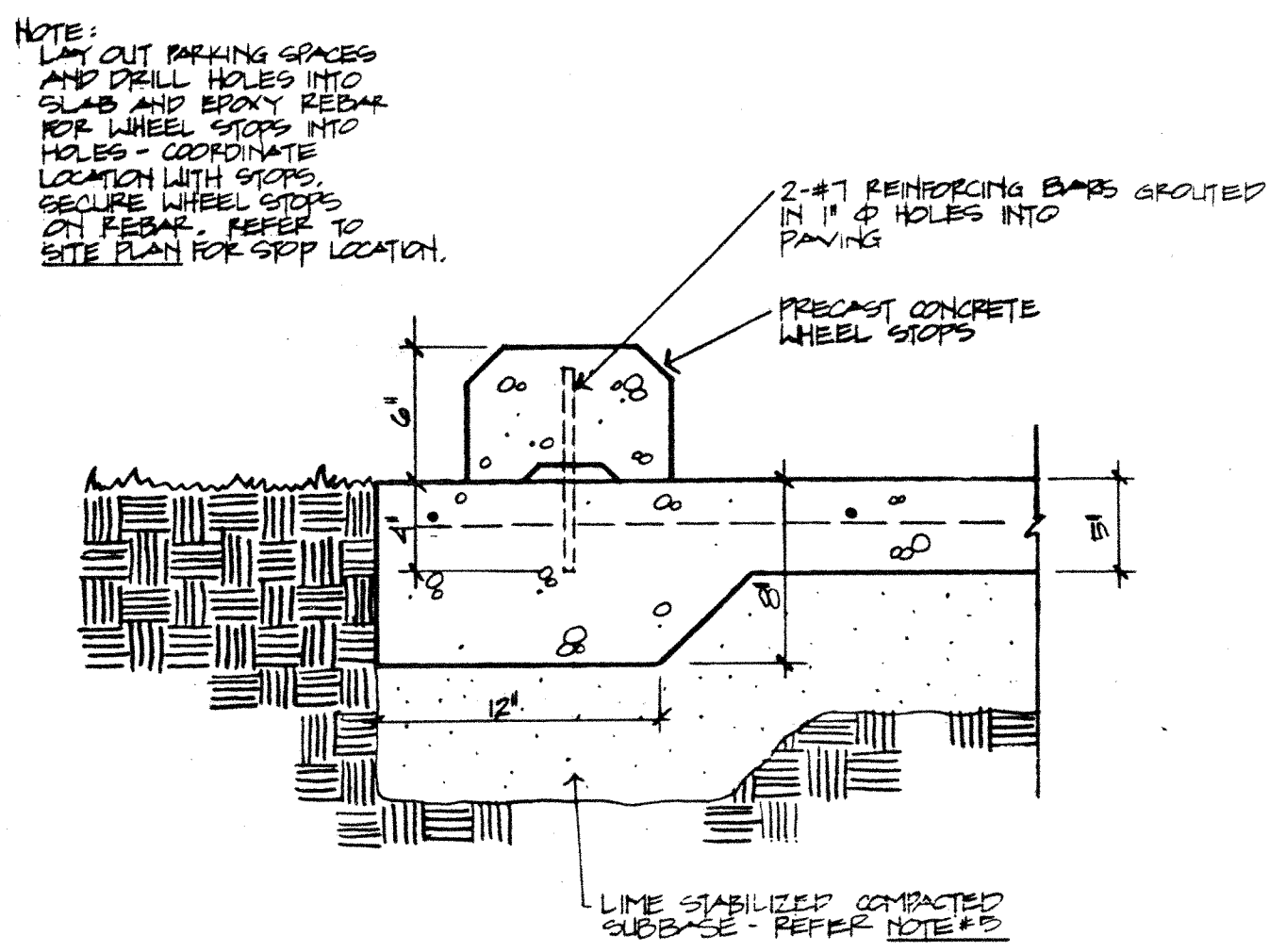


GENERAL NOTES

- SIDEWALKS TO SLOPE 2" FROM BUILDING AND TO HAVE MINIMUM 4" CURB FOR WHEEL STOP.
- GENERAL CONTRACTOR TO PROTECT GUTTERS, CURBS, ETC., AS REQUIRED DURING CONSTRUCTION.
- GENERAL CONTRACTOR TO VERIFY CONNECTIONS OF ALL UTILITIES AND THE EXACT LOCATIONS OF ALL CONNECTIONS.
- ALL PARKING SPACES TO BE 9'-0" X 18'-0" WITH 4" WIDE PAINTED STRIPES. HANDICAPPED STALLS TO BE 13'-0" X 18'-0" TYPICALLY WITH INDICATION BY HANDICAPPED "LOGO".
- EXISTING CLAY SOILS IN PARKING AND DRIVE AREAS SHALL BE EXCAVATED TO A DEPTH EQUAL TO THE THICKNESS OF THE PAVEMENT SECTION. THE EXPOSED SECTION OF THE CLAYS SHALL BE SCRAPPED TO A DEPTH OF AT LEAST 6 INCHES AND MIXED WITH AN ESTIMATED 5 TO 7 PERCENT OF HYDRATED LIME (BY DRY UNIT WEIGHT) IN CONFORMANCE WITH TEXAS HIGHWAY DEPARTMENT ITEM 747 PER THE SOIL REPORT (ALPHA REPORT NO. 87153). THE MIXTURE SHALL THEN BE COMPACTED TO AT LEAST 98 PERCENT OF STANDARD PROCTOR MAXIMUM DRY DENSITY (ASTM D 698) AT OR SLIGHTLY ABOVE THE OPTIMUM MOISTURE CONTENT. IN ALL AREAS WHERE HYDRATED LIME IS USED TO STABILIZE THE SUBGRADE SOILS, ROUTINE ATTERBURG-LIMIT TESTS SHALL BE PERFORMED TO ASSURE THAT THE RESULTING PLASTICITY INDEX OF THE SOIL-LIME MIXTURE IS AT OR BELOW 15. REFER TO SOILS INVESTIGATION FOR MORE INFORMATION.
- PAVING SHALL CONSIST OF 5" THICK CONCRETE REINFORCED WITH #3'S @ 18" O.C. BOTH WAYS ON LIME STABILIZED COMPACTED SUB BASE AS RECOMMENDED BY SOIL REPORT (REFER NOTE #5). 1-1/4" DEEP CONTROL JOINTS TO BE CUT IN SLAB @ 20' O.C. BOTH WAYS, MAXIMUM (REF. DETAIL #2.1.5). INSTALL 1/2" REDWOOD EXPANSION JOINTS WHERE INDICATED ON DRAWINGS (REF. DETAIL #2.1.4).
- SIDEWALKS SHALL CONSIST OF 4" THICK CONCRETE WITH #3'S @ 18" O.C. BOTH WAYS ON 4" SAND CUSHION. INSTALL 1/2" REDWOOD EXPANSION JOINTS AT 25'-0" O.C. MAXIMUM (REF. DETAIL #2.1.2) AND TOoled JOINTS AT 5'-0" O.C. MAXIMUM (REF. DETAIL #2.1.3).
- GENERAL CONTRACTOR TO FIELD VERIFY LOCATION OF UNDERGROUND UTILITIES WITH UTILITY COMPANY REPRESENTATIVE BEFORE CONSTRUCTION.
- GENERAL CONTRACTOR TO FIELD VERIFY EXISTING GRADES AND NOTIFY ARCHITECT/ENGINEER IMMEDIATELY IF EXISTING GRADES AS SHOWN ARE NOT CONSISTENT WITH EXISTING CONDITIONS.
- NEW FIRELANE SHALL BE IN ACCORDANCE WITH THE CITY OF CARROLLTON PAVING IMPROVEMENTS STANDARDS.
- CONCRETE SUPPLIER SHALL DESIGN CONCRETE MIX AND SHALL GUARANTEE CONCRETE STRENGTH. ALL CONCRETE UNLESS OTHERWISE NOTED ON DRAWING, OR REQUIRED OTHERWISE BY CODE, SHALL BE DESIGNED FOR 3,000 PSI STRENGTH, 3,600 PSI AT FIRELANE, AT 28 DAYS WITH NOT LESS THAN FIVE (5) BAGS OF CEMENT PER CUBIC YARD OF CONCRETE, NOT MORE THAN 6.5 GALLONS OF WATER PER BAG OF CEMENT AND NOT MORE THAN A FOUR (4) INCH SLUMP.
- DO NOT SCALE THIS DRAWING!

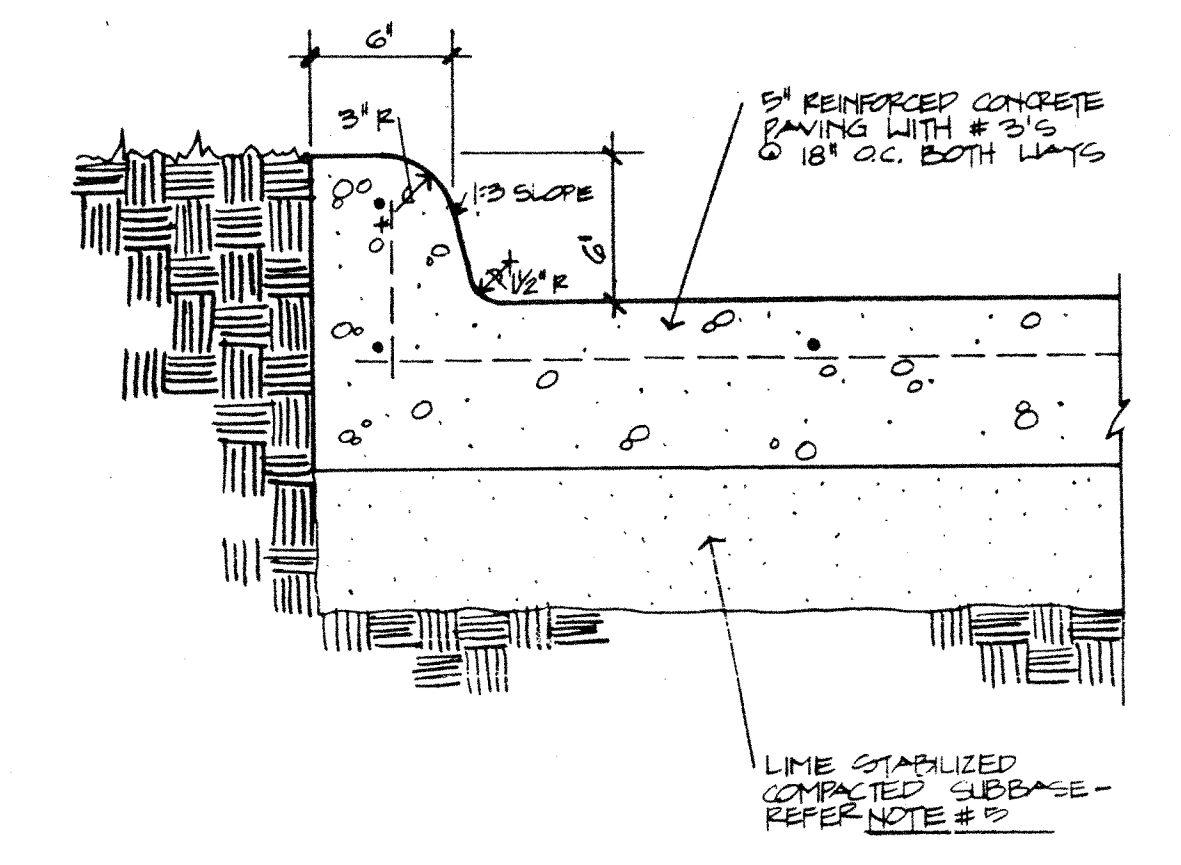
6 TYPICAL CONCRETE CURB/SIDEWALK DETAIL

1 1/2" = 1'-0"



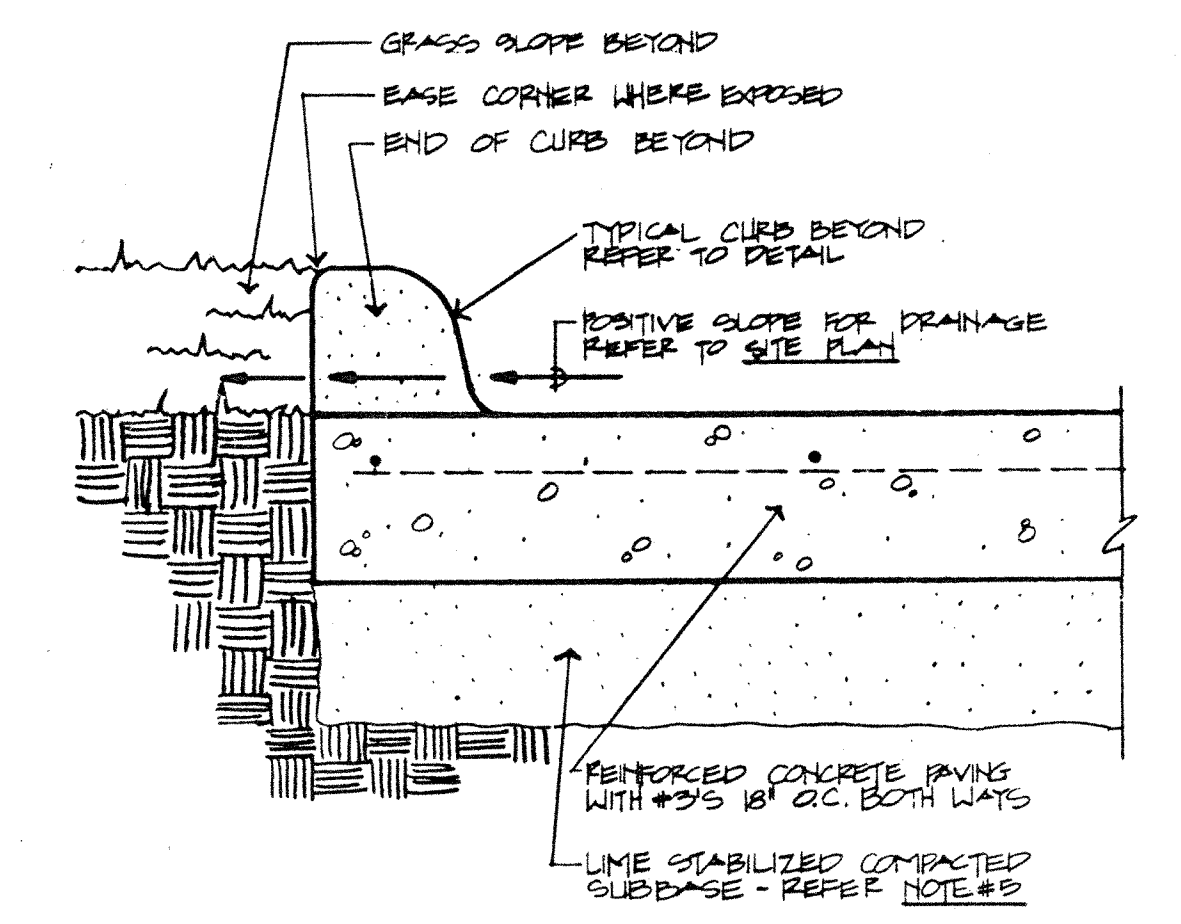
7 TYPICAL PAVING DETAIL AT WHEEL STOPS

1 1/2" = 1'-0"



8 TYPICAL CONCRETE CURB DETAIL

1 1/2" = 1'-0"



9 TYPICAL SECTION AT CURB CUT

1 1/2" = 1'-0"

REVISIONS:

1	11/18/87	CHANGES PER PLAN
2	9/16/87	MAX. CURB CUT

PROJECT NUMBER: 86.016

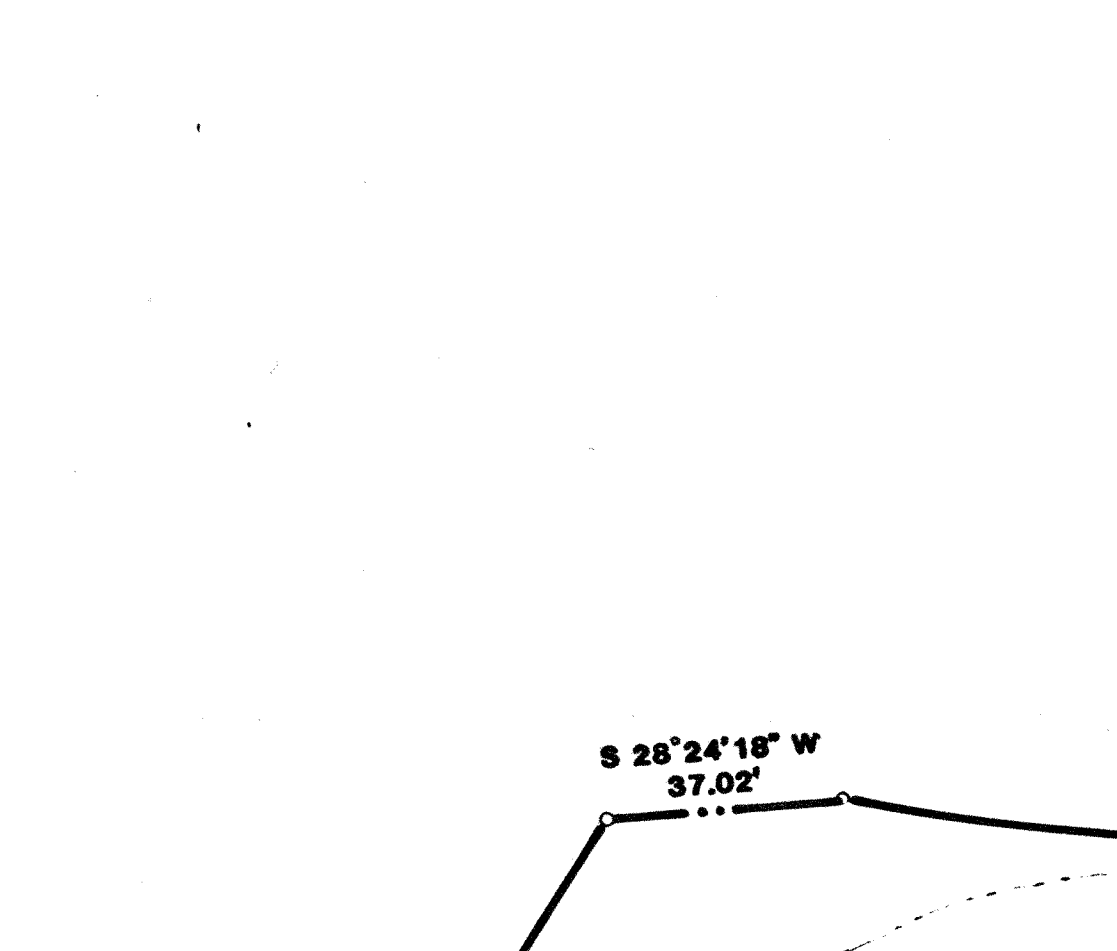
DATE: OCTOBER 15, 1987

DRAWN BY: LC, KJ, MM, BR

APPROVED BY: BB, JVS

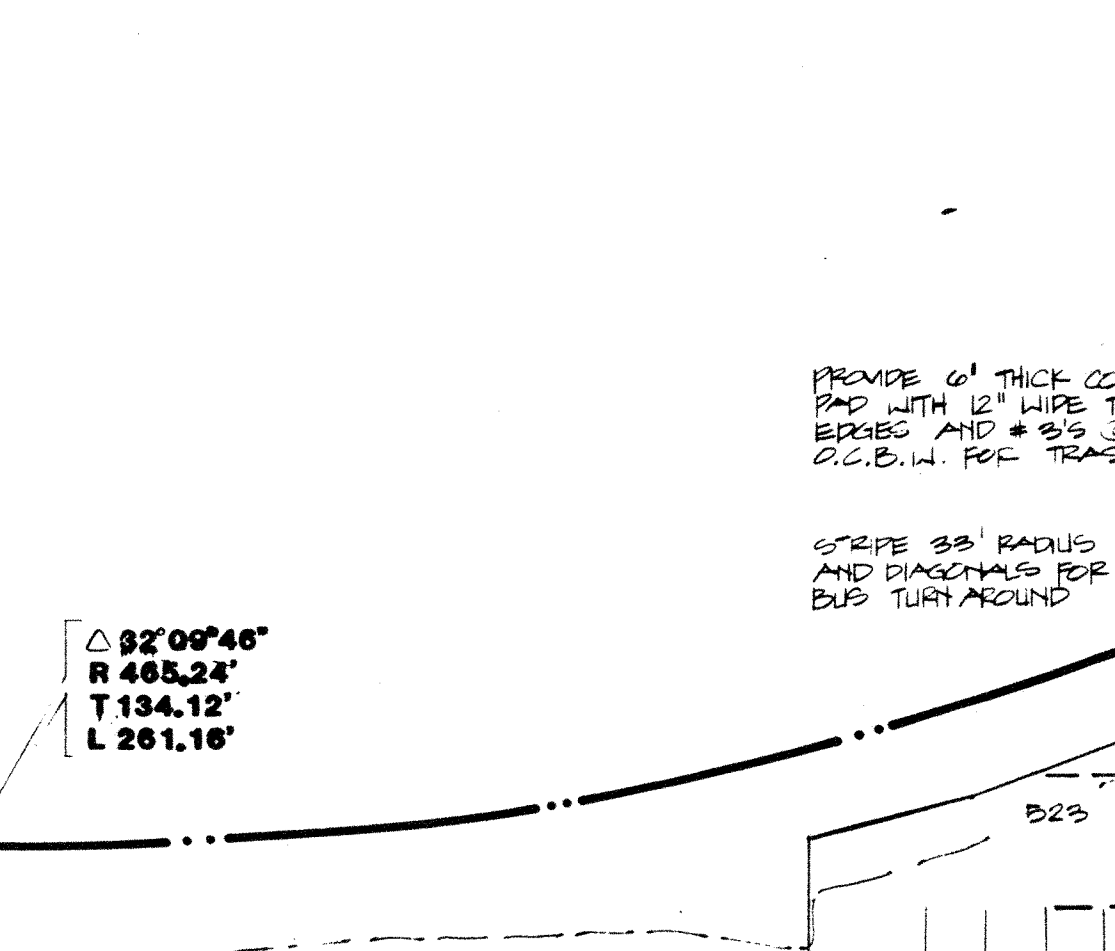
5 TYPICAL SAW JOINT DETAIL AT PAVING

1 1/2" = 1'-0"



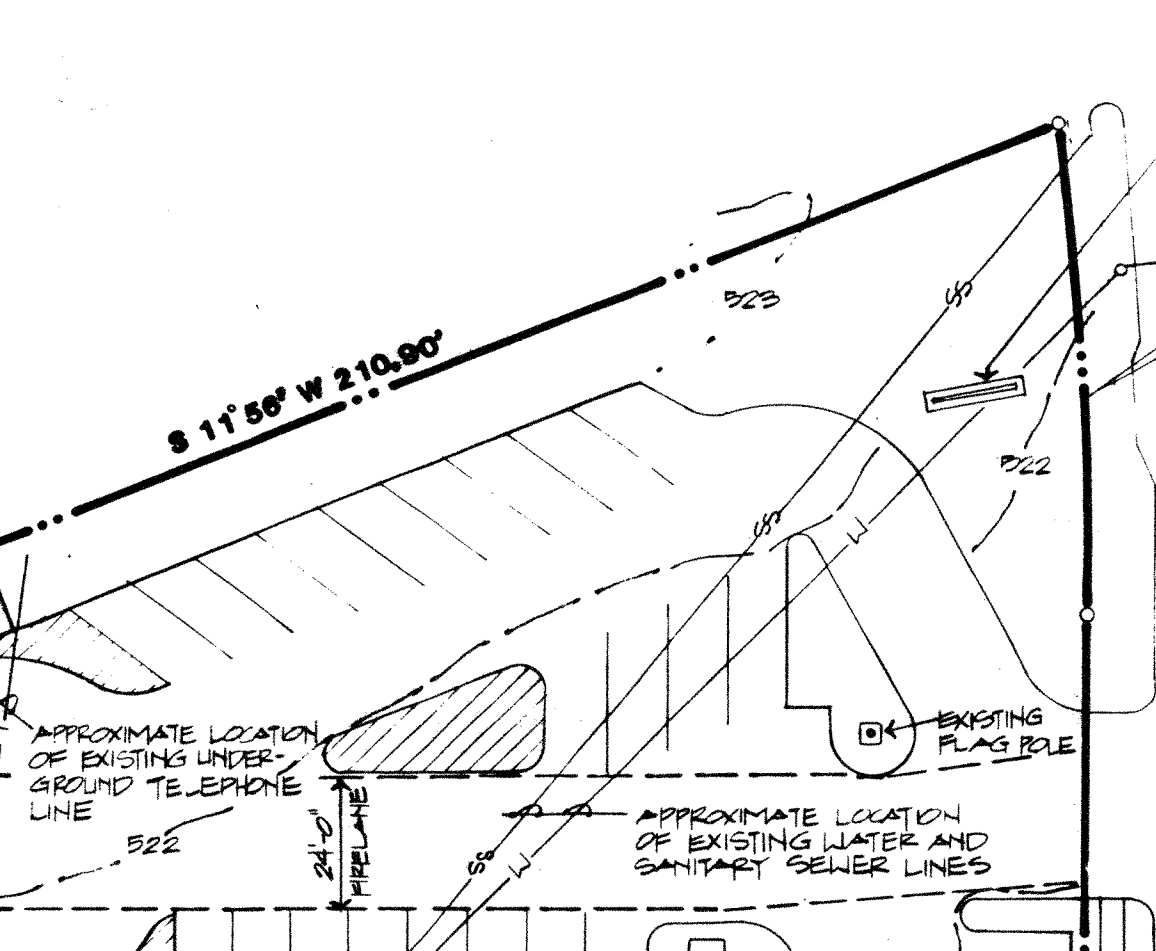
4 TYPICAL EXPANSION JOINT DETAIL AT PAVING

1 1/2" = 1'-0"



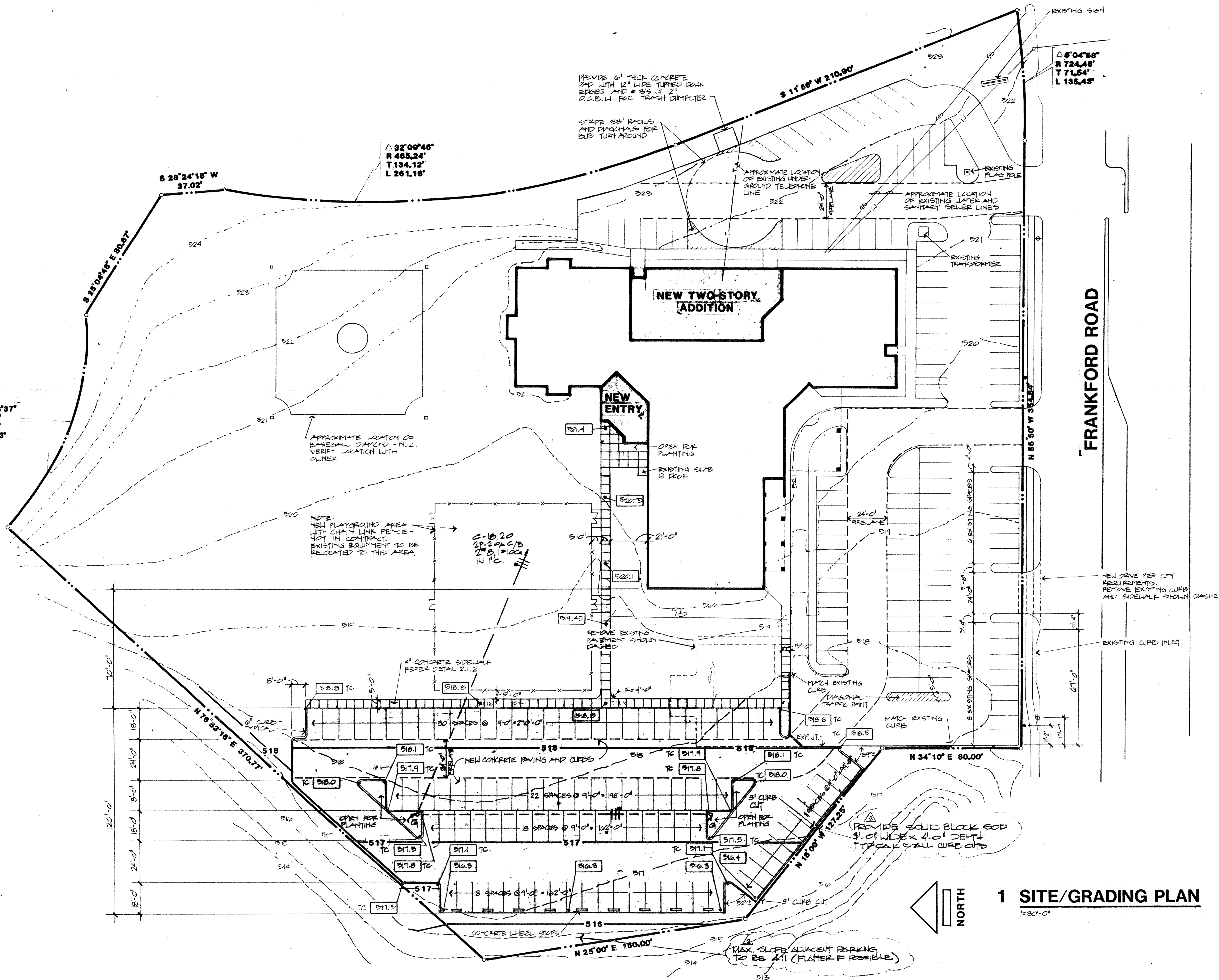
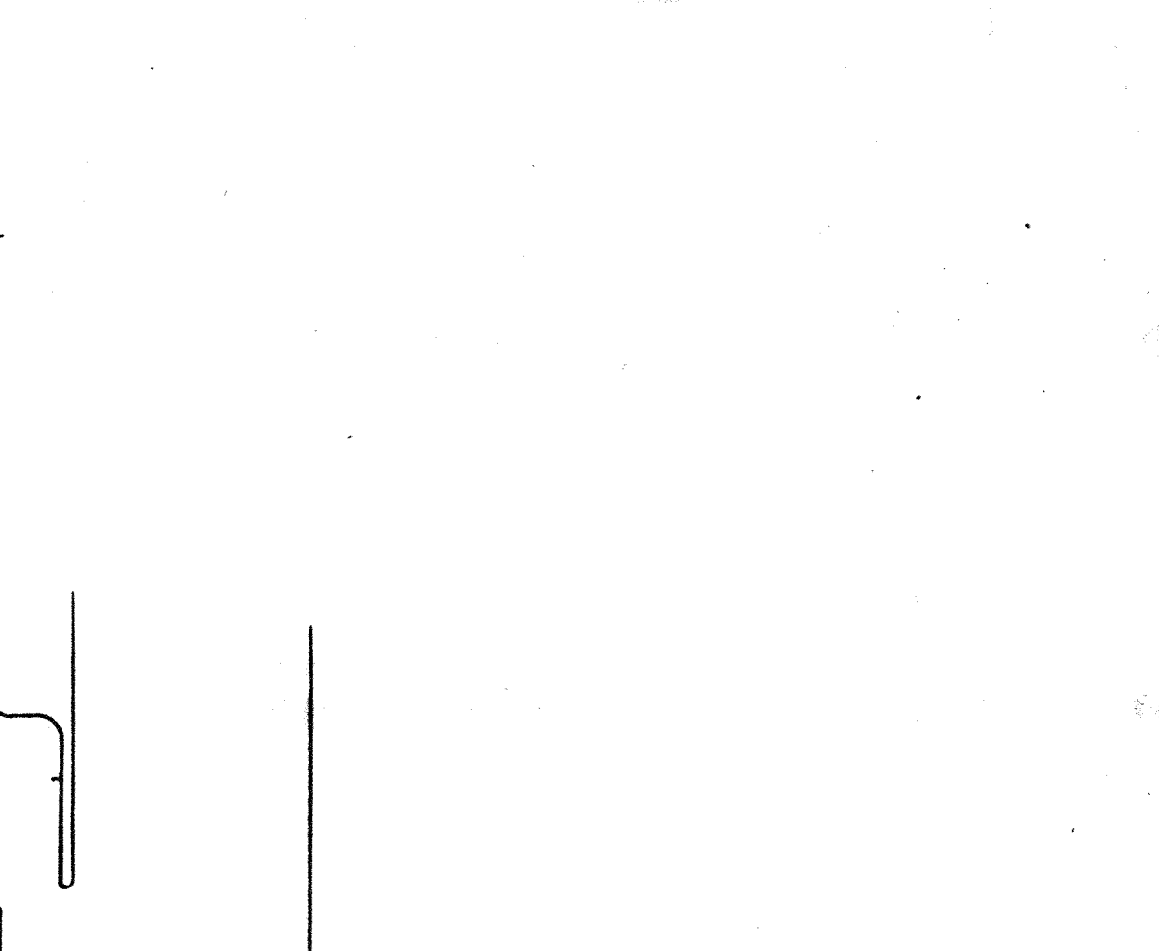
3 TYPICAL SIDEWALK SECTION

1 1/2" = 1'-0"



2 TYPICAL EXPANSION JOINT DETAIL AT WALK

1 1/2" = 1'-0"



1 SITE/GRADING PLAN

1" = 80'-0"

REVISIONS:

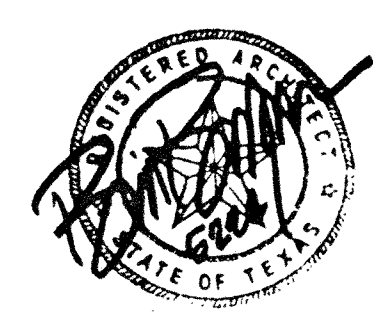
1	11/18/87	CHANGES PER PLAN
2	9/16/87	MAX. CURB CUT

PROJECT NUMBER: 86.016

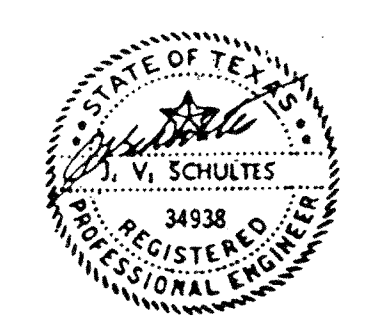
DATE: OCTOBER 15, 1987

DRAWN BY: LC, KJ, MM, BR

APPROVED BY: BB, JVS



QUANTUM GROUP
ARCHITECTS - ENGINEERS



2550 Walnut Hill Lane, Suite 250, Dallas, Texas 75229
(214) 350-2306

Prince of Peace

LUTHERAN CHURCH