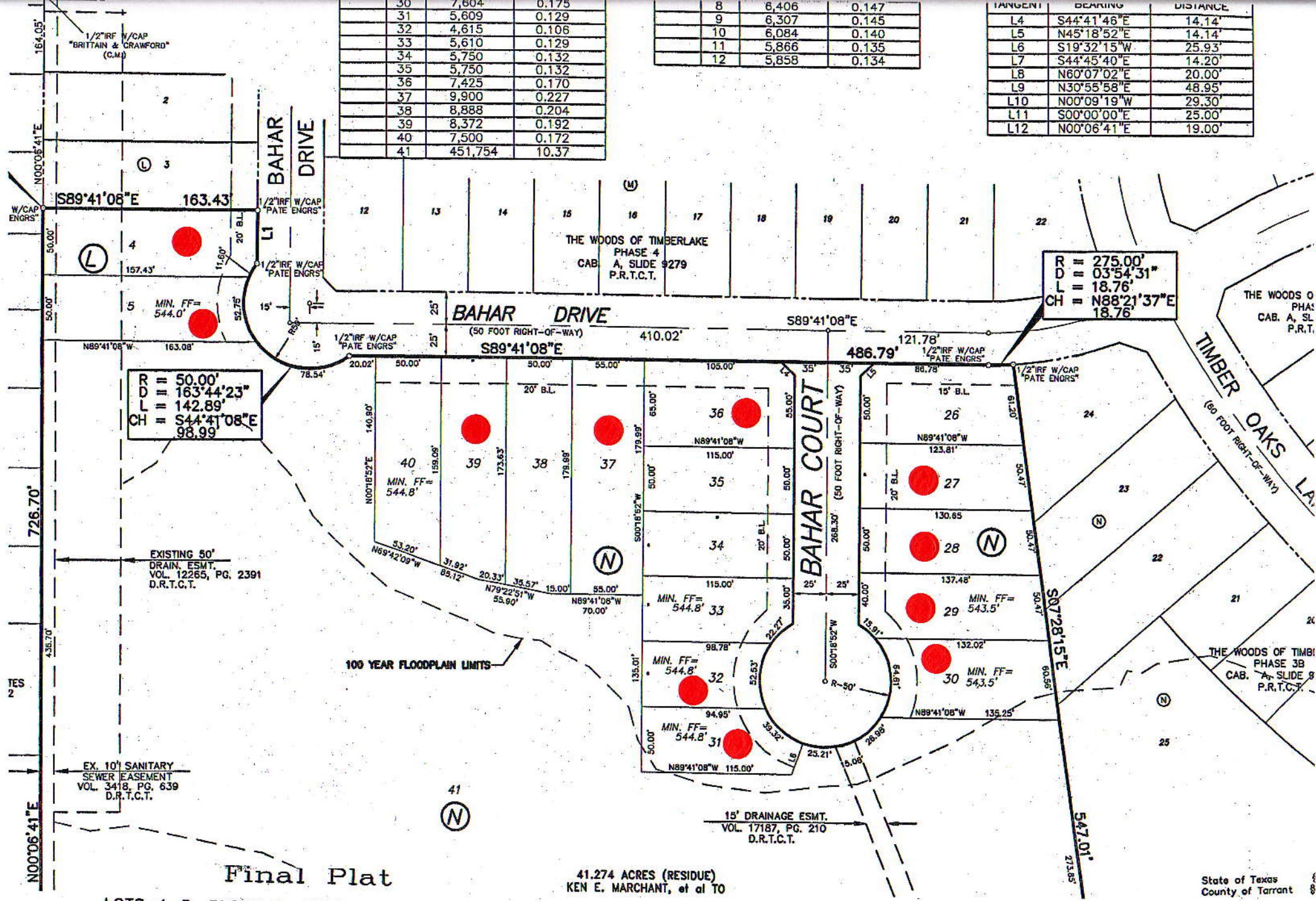


30	7,604	0.175
31	5,609	0.129
32	4,615	0.106
33	5,610	0.129
34	5,750	0.132
35	5,750	0.132
36	7,425	0.170
37	9,900	0.227
38	8,888	0.204
39	8,372	0.192
40	7,500	0.172
41	451,754	10.37

8	6,406	0.147
9	6,307	0.145
10	6,084	0.140
11	5,866	0.135
12	5,858	0.134

TANGENT	BEARING	DISTANCE
L4	S44°41'46"E	14.14'
L5	N45°18'52"E	14.14'
L6	S19°32'15"W	25.93'
L7	S44°45'40"E	14.20'
L8	N60°07'02"E	20.00'
L9	N30°55'58"E	48.95'
L10	N00°09'19"W	29.30'
L11	S00°00'00"E	25.00'
L12	N00°06'41"E	19.00'



R = 50.00'
 D = 163°44'23"
 L = 142.89'
 CH = S44°41'08"E
 98.99'

R = 275.00'
 D = 03°54'31"
 L = 18.76'
 CH = N88°21'37"E
 18.76'

EXISTING 50'
 DRAIN. ESMT.
 VOL. 12265, PG. 2391
 D.R.T.C.T.

EX. 10' SANITARY
 SEWER EASEMENT
 VOL. 3418, PG. 639
 D.R.T.C.T.

15' DRAINAGE ESMT.
 VOL. 17187, PG. 210
 D.R.T.C.T.

Final Plat
 LOTS 4-5, BLOCK L, LOTS 26-41, BLOCK N,
 LOTS 1-12, BLOCK O
The Woods of Timberlake
 Phase 5

41.274 ACRES (RESIDUE)
 KEN E. MARCHANT, et al TO