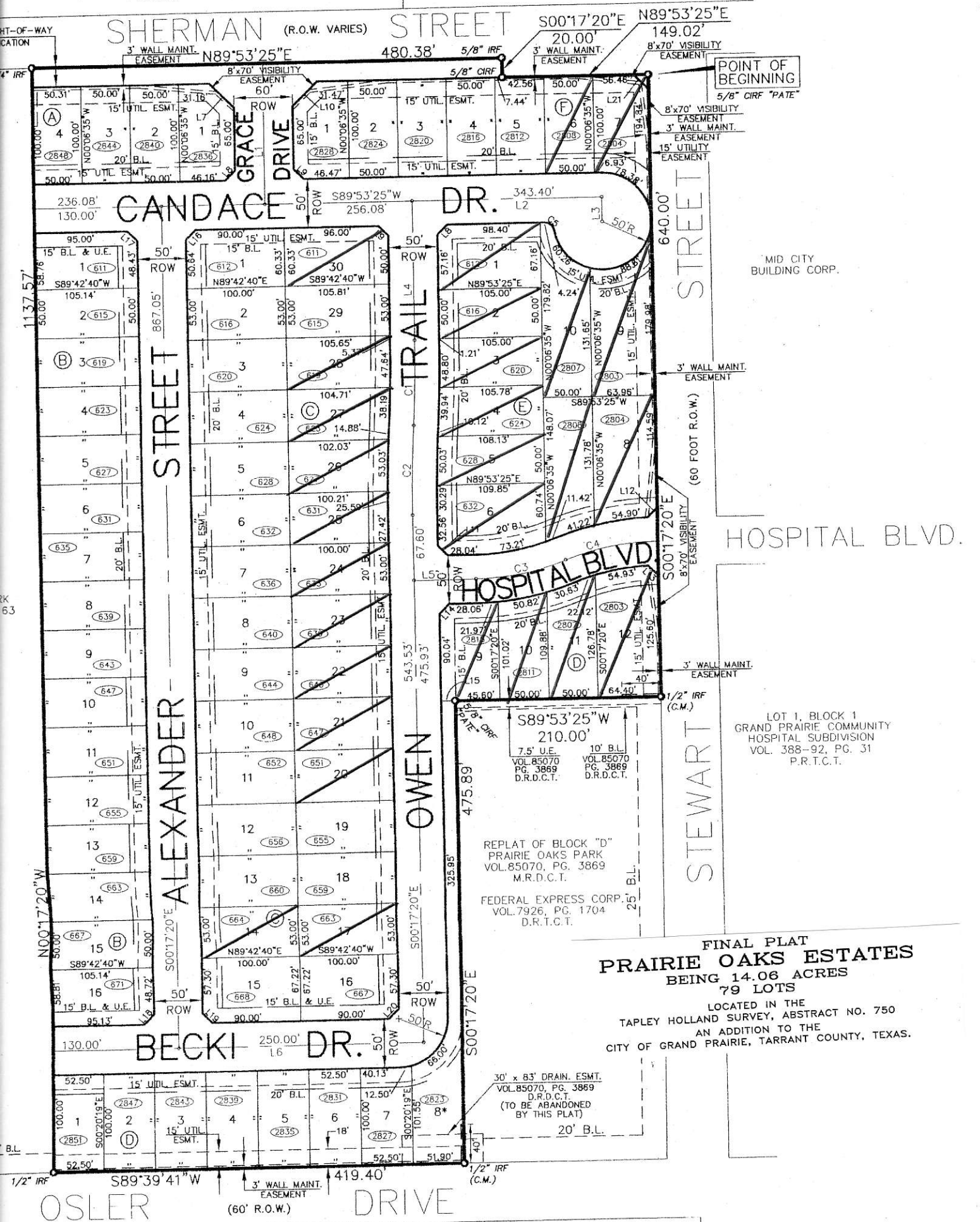


BLOCK CR1A
SILVER BELLE ESTATES ADDN.
CAB. B, SLIDE 6802
P.R.T.C.T.

BLOCK CR1B
SILVER BELLE ESTATES ADDN.
CAB. B, SLIDE 6802
P.R.T.C.T.



POINT OF BEGINNING
5/8" CIRCF "PATE"

MID CITY BUILDING CORP.

HOSPITAL BLVD.

LOT 1, BLOCK 1
GRAND PRAIRIE COMMUNITY
HOSPITAL SUBDIVISION
VOL. 388-92, PG. 31
P.R.T.C.T.

REPLAT OF BLOCK "D"
PRAIRIE OAKS PARK
VOL. 85070, PG. 3869
M.R.D.C.T.

FEDERAL EXPRESS CORP.
VOL. 7926, PG. 1704
D.R.T.C.T.

FINAL PLAT PRAIRIE OAKS ESTATES BEING 14.06 ACRES 79 LOTS

LOCATED IN THE
TAPLEY HOLLAND SURVEY, ABSTRACT NO. 750
AN ADDITION TO THE
CITY OF GRAND PRAIRIE, TARRANT COUNTY, TEXAS.

30' x 83' DRAIN. ESMT.
VOL. 85070, PG. 3869
D.R.D.C.T.
(TO BE ABANDONED
BY THIS PLAT)

30' x 83' DRAIN. ESMT.
VOL. 85070, PG. 3869
D.R.D.C.T.

LOT 2, BLOCK C
PRAIRIE OAKS PARK